



**Verlag Schreiber-Neumann /
Schreiber-Neumann Publishing**

Kartäuserstr. 1
40468 Düsseldorf

Germany

Web: www.WolfgangSchreiber.de
Email: wstools@WolfgangSchreiber.de

C1x

Select ConsoleOne Snap-Ins at Startup

C1x.exe is a free Win32 tool that allows you select the needed ConsoleOne snapins at startup, thereby significantly reducing the load time

Purpose

With the growing number of available snap-ins for ConsoleOne (C1) the time for the application to start is rapidly growing.

In many situations not all snap-ins are needed for the current task, and sometimes loading a specific snap-in may even be undesirable.

Using C1X you can simply select the snap-ins that you want to load at run-time.

Concept

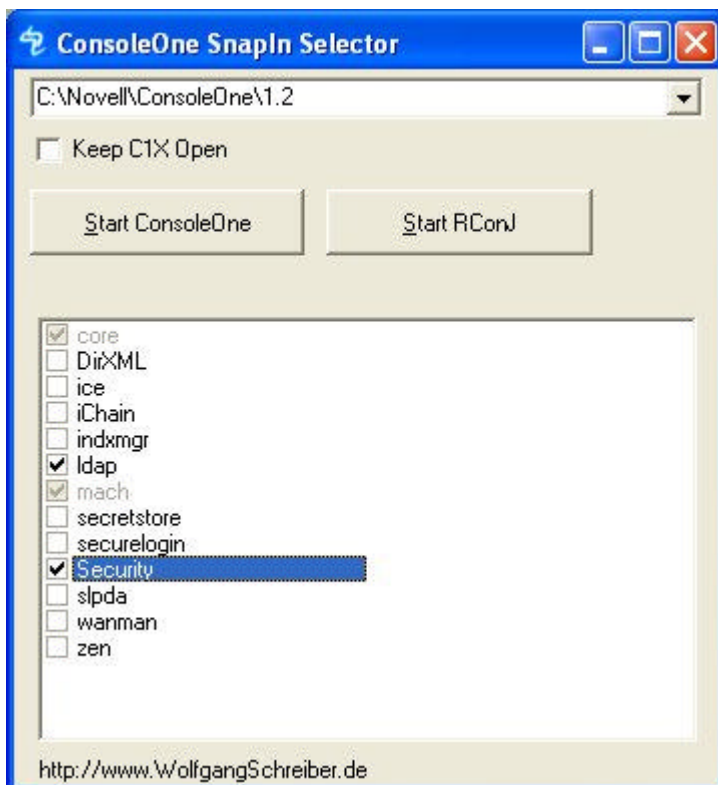
C1x uses a very simple method to approach this problem:

Using a checkbox selector you can select the snap-ins that you want to load; all other snap-ins are temporarily disabled.

In the background, C1X creates temporary directories (e.g., C:\Novell\consoleone\1.2\inactive*) and moves unused snap-ins into these subdirectories until they are reactivated with C1X

Starting C1X

- Start C1x.exe, select the Snapins that you need - that's it.



Setup

- No setup is required, but if you keep the ConsoleOne application in some other directory than the default (C:\Novell\consoleone\1.2), this path has to be entered when starting C1X for the first time.
Note: Enter the ConsoleOne base path - the one which has all the subdirectories like "bin", "lib" etc.
- After snap-in selection, you may start ConsoleOne from the GUI, or use your normal ConsoleOne shortcut, since the unwanted snap-ins are disabled.
- To re-enable any snap-in, simply check the respective checkbox in C1X

Do's and Don'ts

- Do not disable any of the listed C1X modules while you have an instance of ConsoleOne running. This could cause your running instance of ConsoleOne to hang or crash.
- Before installing ConsoleOne updates or new modules, call C1X and enable all existing modules so that they are correctly detected by your installation routine.

RConsole

You may integrate an RConsole launcher in the C1X startup screen. Simply get RConj.exe and rconsolej.jar from the Novell website and save them them as .\1.2\rconj.exe and .\1.2\lib\rconsolej.jar respectively (or the equivalent path)

Distribution

This application is freeware, feel free to distribute, as long as the EXE and TXT file are not changed.

Fineprint

Of course there is no support, no guarantee, no free T-shirts, and usage is at your own risk.

Updates

The most recent version of C1X, as well as other cool tools - can be found at www.WolfgangSchreiber.de

History

- Initial version 2003
- Last Update 2006-05: v1.3b Fixed "ConsoleOne" not found error

Questions and answers

Q: Some of the listed modules in C1X show a mouse-over hint, while others don't

A: The hints are stored for many well-known modules. To add your own (or localized) hints, simply edit C1X.INI

Q: The RConJ button is disabled

A: You do not have a working installation of the Java Remote Console (RConJ) in your specified ConsoleOne path. Get a current version of RConJ.zip on Novell's web site (e.g. TID #: 2969377) and extract to a temp working dir. You only need to copy the files under "public\mgmt\ConsoleOne" to your ConsoleOne path.

Q: I use C1.exe instead of ConsoleOne & it works fine for me, I just have a strange screen lay-out. I see a couple of options twice.

A: This could happen in two situations:

- * You have installed new ConsoleOne modules while the same (or older versions) were disabled by C1X - then you have an active new and an inactive old version
- * the directories in your ConsoleOne\1.2\ path are flagged readonly

Solution:

- * Mark all modules as enabled
- * Manually delete or move away the inactive.* directories in your ConsoleOne\1.2\ path